

**TECHNICAL
INFORMATION**

In the interest of continuing product improvement,
we reserve the right to change models,
specifications, and/or features without prejudice.

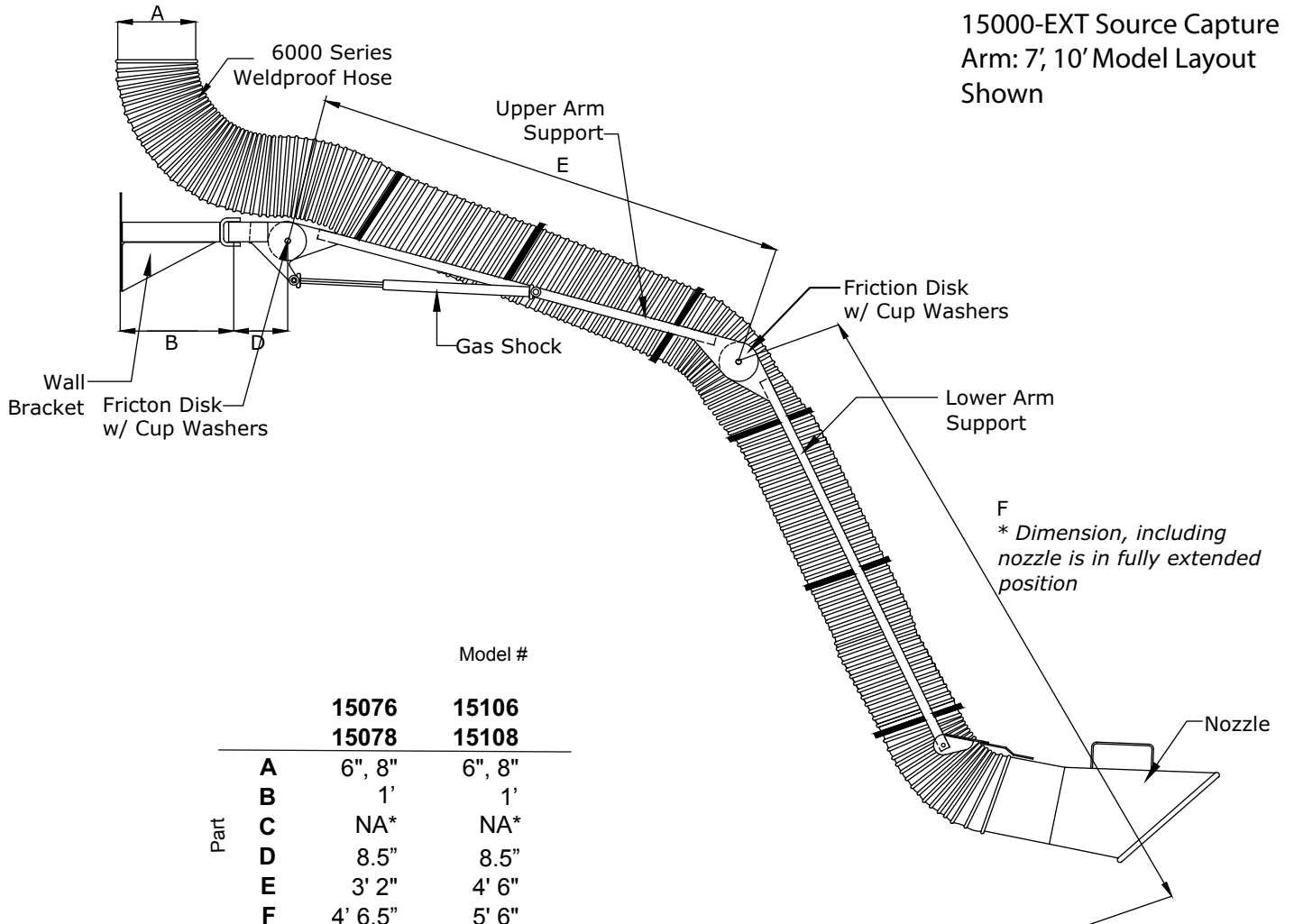
PROJECT: _____
LOCATION: _____
ARCHITECT: _____
ENGINEER: _____
CONTRACTOR: _____
DATE: _____ SALES ENGINEER: _____

www.monoxivent.com

info@monoxivent.com

309-794-1000

Page: WSC-14A



	Model #	
	15076	15106
	15078	15108
Part		
A	6", 8"	6", 8"
B	1'	1'
C	NA*	NA*
D	8.5"	8.5"
E	3' 2"	4' 6"
F	4' 6.5"	5' 6"

NA* Not Applicable on these models.

SERIES 15000-EXT IS AVAILABLE WITH EITHER 6" OR 8" DIAMETER HOSE
SERIES 15000-EXT IS AVAILABLE IN 7', 10', AND 14' LENGTHS

NOZZLE: Stainless Steel

ARM SUPPORT STRUCTURES:

SECTIONS B & C - 2"x2"x1/8" Wall Steel

SECTIONS E & F - 1"x1"x14 Ga. Wall Steel

Hose: Series 6000, other options available (chemical resistant) - please consult factory

* Please consult factory for additional information, other diameters, and lengths