



Standard Slotted Fume Hoods  
Series - SFH

## TECHNICAL INFORMATION

In the interest of continuing product improvement,  
we reserve the right to change models,  
specifications, and/or features without prejudice.

PROJECT: \_\_\_\_\_  
 LOCATION: \_\_\_\_\_  
 ARCHITECT: \_\_\_\_\_  
 ENGINEER: \_\_\_\_\_  
 CONTRACTOR: \_\_\_\_\_  
 DATE: \_\_\_\_\_ SALES ENGINEER: \_\_\_\_\_

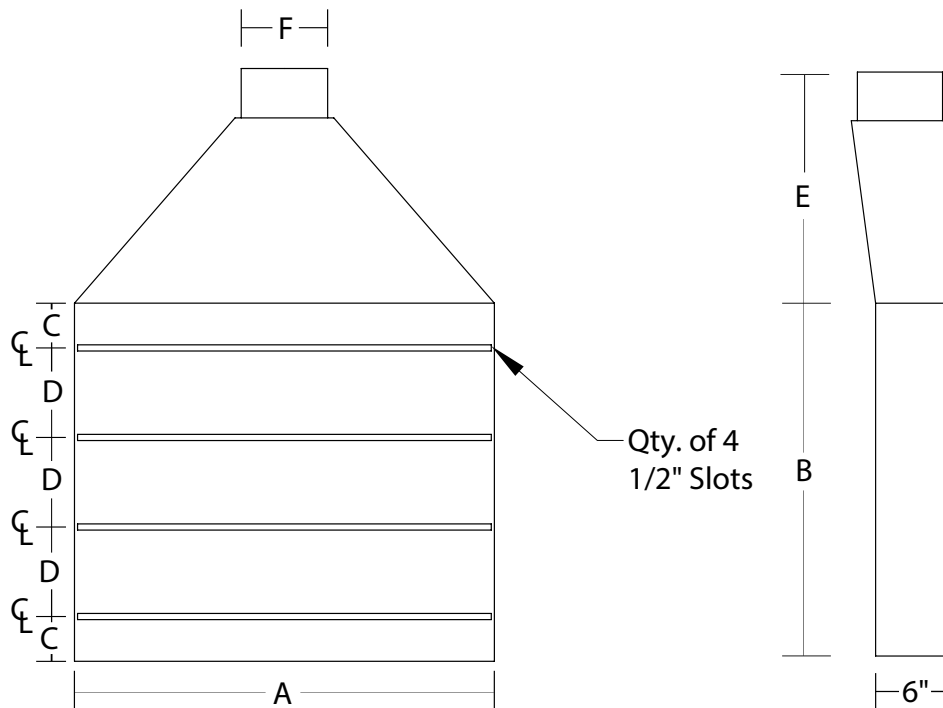
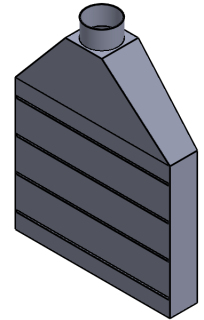
www.monoxivent.com

info@monoxivent.com

309-794-1000

Page: WSC-28

### Standard Slotted Fume Hoods Series -SFH



Model	A	B	C	D	E	F	CFM Guidelines	P.D.	Weight
SFH-34	34"	29"	3 5/8"	7 1/2"	15"	7"	1050	.67"	114 lbs.
SFH-46	46"	35"	4 3/8"	9 3/4"	21"	8"	1400	.70"	142 lbs.
SFH-58	58"	38"	4 3/4"	9 1/2"	27"	8"	1750	.82"	150 lbs.

**Notes:**

Slotted Hood Depth - 6" for all models - Construction is 18-gauge Welded Paint Grip Galvanized Steel  
 Slotted Hood Performance is based on Industrial Ventilation Guidelines - 28th Edition  
 Pressure drop calculations based on recommended CFM  
 Pressure drop will vary if alternate CFM is used

Custom slotted fume hood design form available on page WSC-29.