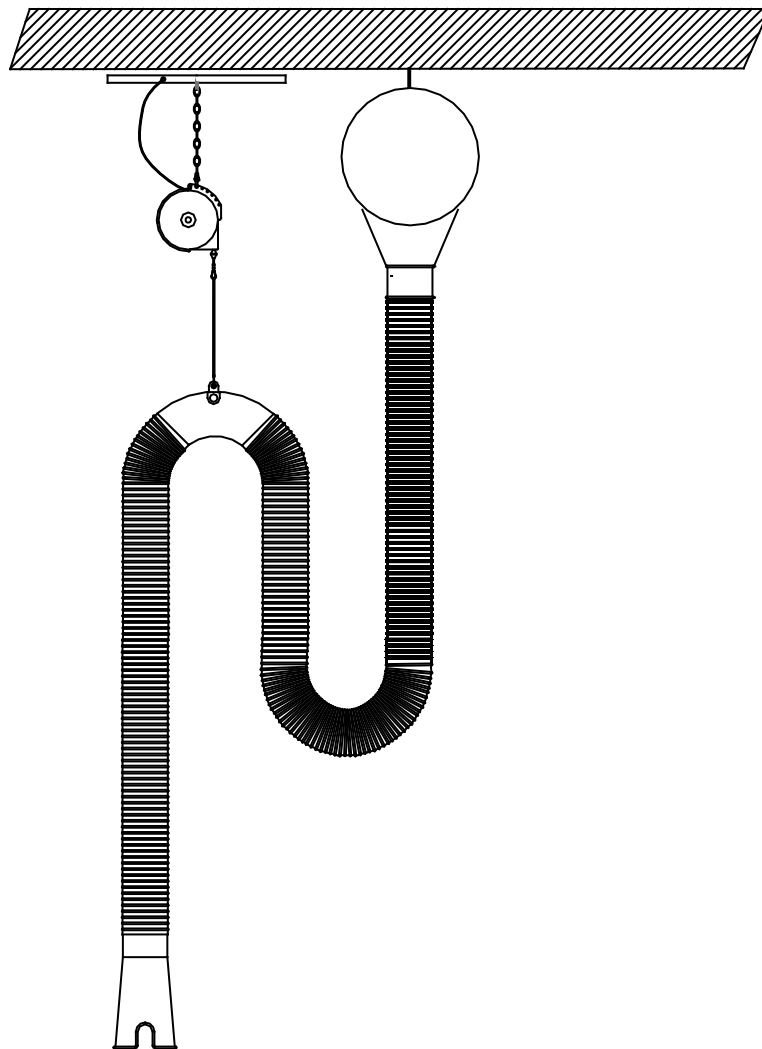


# MONOXIVENT<sup>®</sup>

Source Capture Systems

## Operation and Maintenance Manual

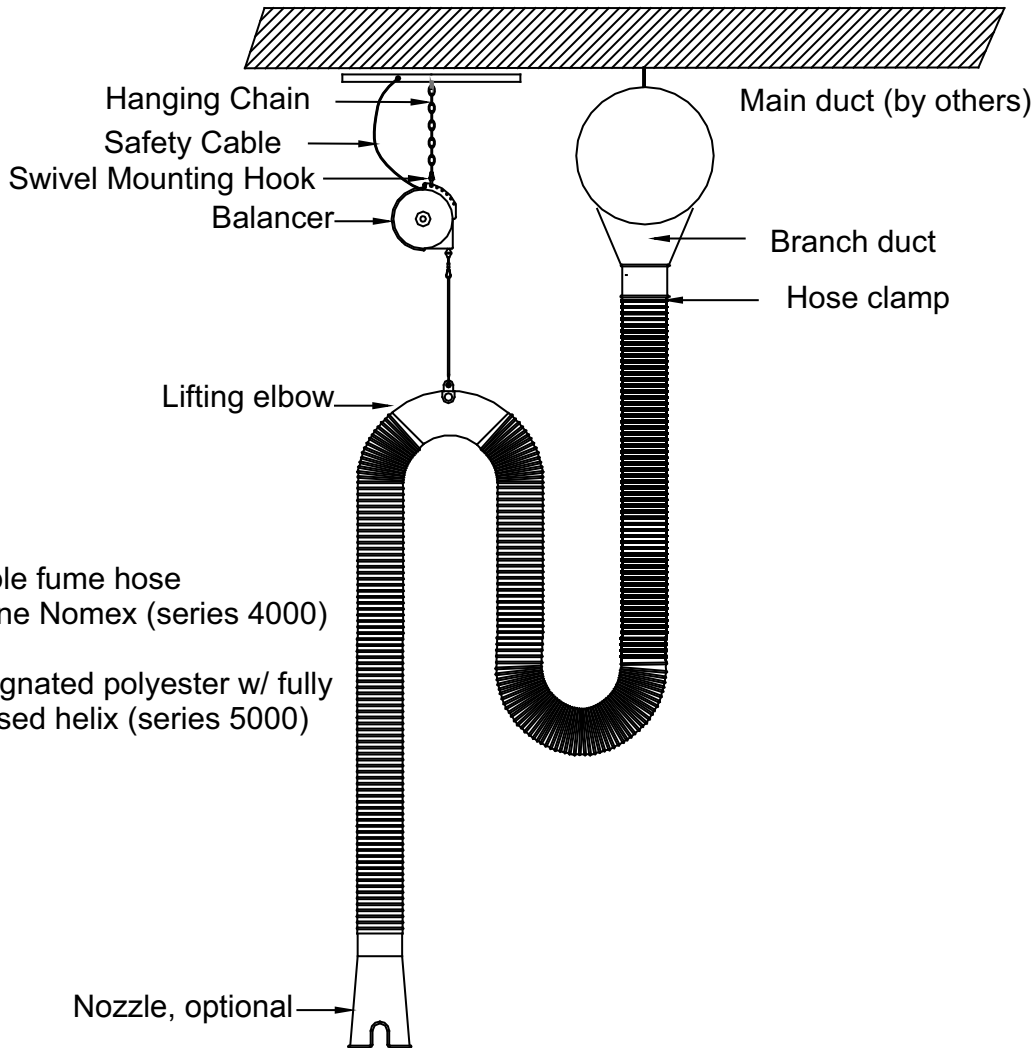
### 11000 Series Exhaust System with Cable Balancer



**MONOXIVENT - SOURCE CAPTURE SYSTEMS**

1306 Mill St., Rock Island, IL 61201  
877-608-4383 - [info@monoxivent.com](mailto:info@monoxivent.com)  
[monoxivent.com](http://monoxivent.com)

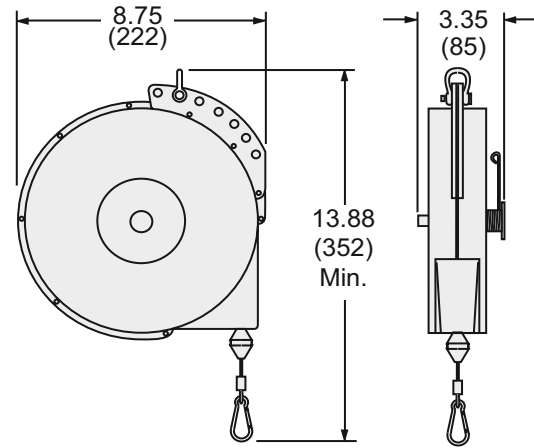
**SERIES - 11000-D**



**NOTE:** Series 4000/5000 Hose - Standard  
Series 7000 - Optional consult factory for pricing

**NOTE:** 11000-D System is to be attached to a rigid overhead duct. Overhead duct to be supplied by others. Balancer will require a supporting structure located closest to the hose to the duct connection as possible. Maximum height of balancer mounting is at the point of hose to duct connection.

**MODEL BAL-T**



All Dimensions in INCHES (mm)

**Standard Features of the BAL-T:**

- A. Lock Mechanism to Permit Operator to Stop at Desired Position
- B. Slight Pull on Cable to Release Stop Lock
- C. An "off" Switch to Disengage the Lock Mechanism
- D. External Tension Adjustment Provides Fast and Easy Fine Tuning
- E. 15 Ft. of 3/32" Diameter Steel Cable and Adjustable Cable Stop
- F. Snap Hook, Multi-Directional Cable Guide, Forge Clevis Top Mount
- G. Automatic Safety Lock (spring fails then drum automatically locks)
- H. Safety Chain
- I. Maintenance Free and is Lifetime Lubricated at Factory
- J. Lifting Capacity of 15 Pounds

\* For further details please refer to manual and parts list.

### TENSION ADJUSTMENT

Increase tension if reel will not completely rewind cable with load attached until bumper stop reaches guide.

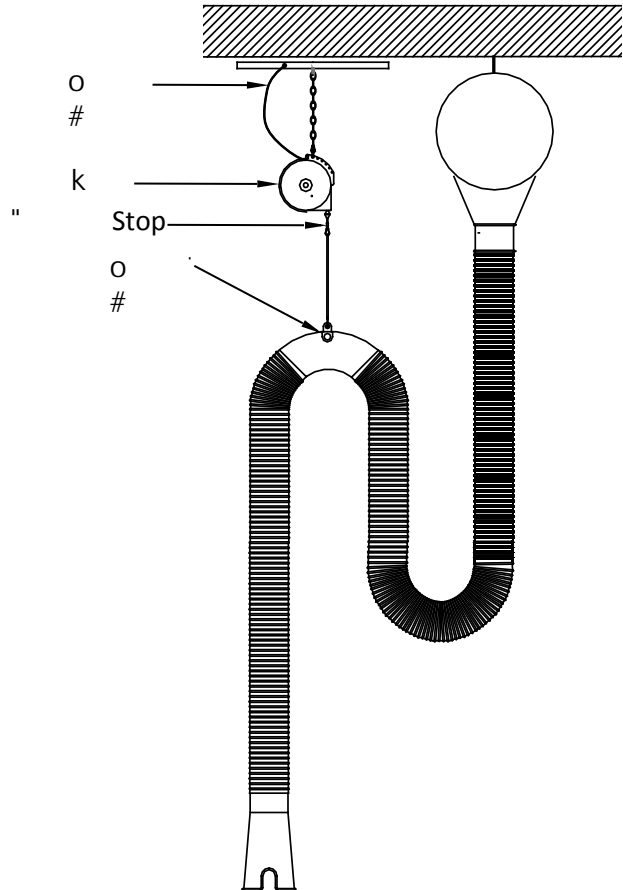
1. Allow cable to retract as far as possible.
2. Place wrench on flats of shaft. Turn shaft counter-clockwise until cable stop reaches guide.

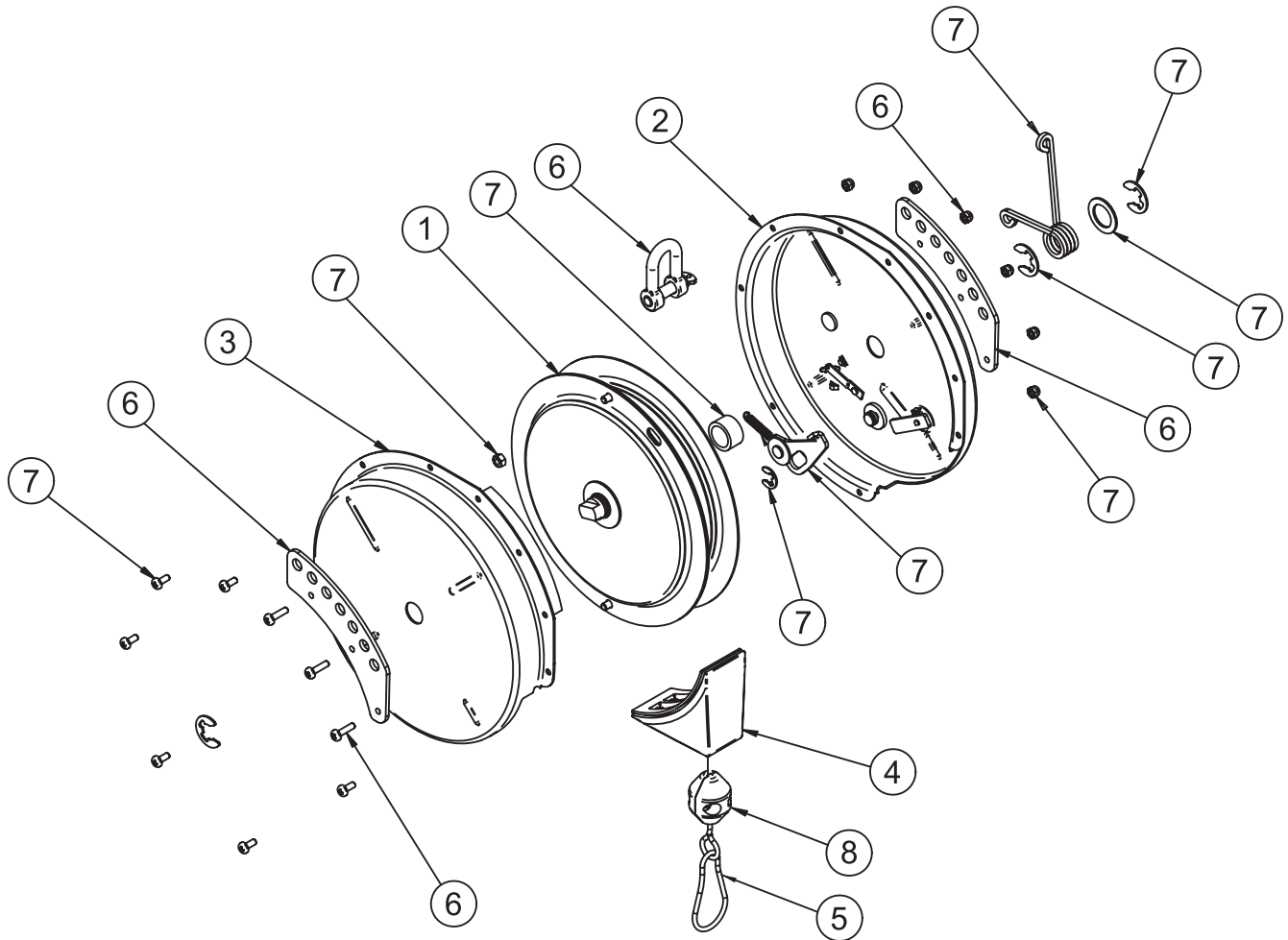
Decrease tension if load cannot easily be pulled down to desired height.

1. If reel is so equipped, turn ratchet lock to "OFF" (knob is located on side of reel).
2. Place wrench on flats of shaft.
3. Hold shaft firmly with wrench. Depress spring on opposite side of reel.
4. Allow shaft to turn SLOWLY in clockwise direction until desired tension is achieved. If shaft will not turn in clockwise direction UNASSISTED, reel is at minimum tension and further tension reduction should not be attempted.

### REGULAR MAINTENANCE

Reel is factory lubricated for life. No additional lubrication is required.





**Replacement parts available as kits only.**

#	KIT DESCRIPTION	BAL-T
1	<b>Spring Motor Assembly:</b> Spring motor, spool, shaft and bushings in sealed container	K01-A
2	<b>RH Housing Assembly:</b> RH housing half, ratchet lock assembly	K02-B
3	<b>LH Housing Assembly:</b> LH housing half, nameplate	K03-A
4	<b>Cable Guide</b>	K04-A
5	<b>Cable Assembly:</b> Cable, safety clip, lockwasher-M4, hex nut-M4	K05-A
6	<b>Hanging Bracket Assembly:</b> Hanging bracket, clevis pin assembly, slotted machine screw M14 x 14mm (3), lockwasher-M4 (3), hex nut-M4(3)	K06-A
7	<b>Hardware Package:</b> Spacer, torsion spring, slotted machine screw M4 x 14mm (3), slotted machine screw M4 x 8mm (6), lockwasher-M4 (10), hex nut-M4 (10), retaining ring (3), shim, extension spring and ratchet lock assembly	K07-A
8	<b>Bumper Stop</b>	S602413