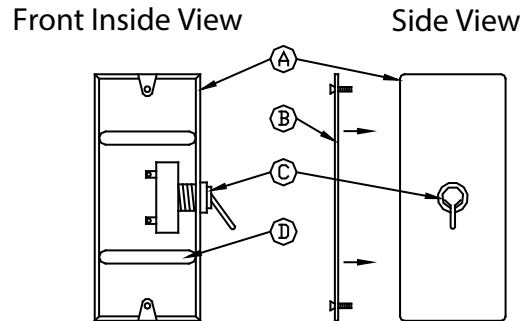


**TECHNICAL  
INFORMATION**

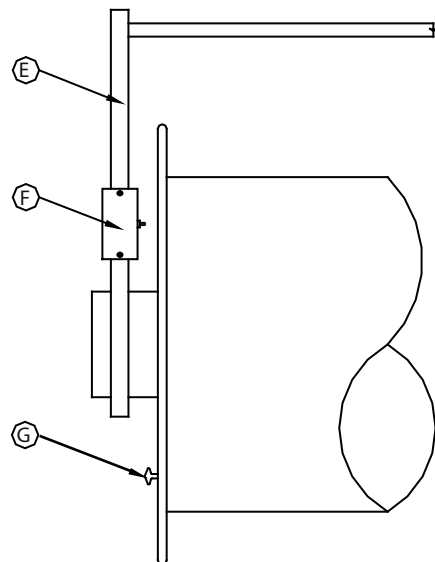
In the interest of continuing product improvement,  
we reserve the right to change models,  
specifications, and/or features without prejudice.

PROJECT: \_\_\_\_\_  
 LOCATION: \_\_\_\_\_  
 ARCHITECT: \_\_\_\_\_  
 ENGINEER: \_\_\_\_\_  
 CONTRACTOR: \_\_\_\_\_  
 DATE: \_\_\_\_\_ SALES ENGINEER: \_\_\_\_\_

**On/Off DMSHR Switch is an Option**



**On/Off DMSHR Switch Assembly Model # DMSHR**



Switch Assembly  
Mounted to Hose Reel

A. Sealed Mounting Box  
 D. (2) Slot Cuts for Adjustment  
of Box Depth  
 G. Bumper Pad for Activating  
the On/Off Toggle

B. Box Cover Plate  
 E. H-Reel Support  
Mounting Frame

C. On/Off Toggle Switch  
 F. On/Off Switch Control Assembly