

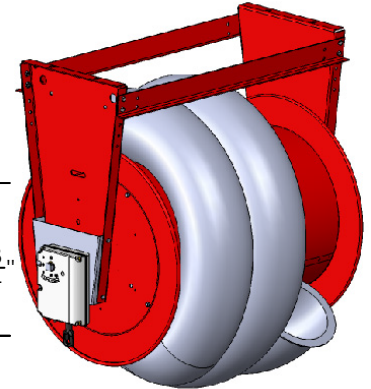
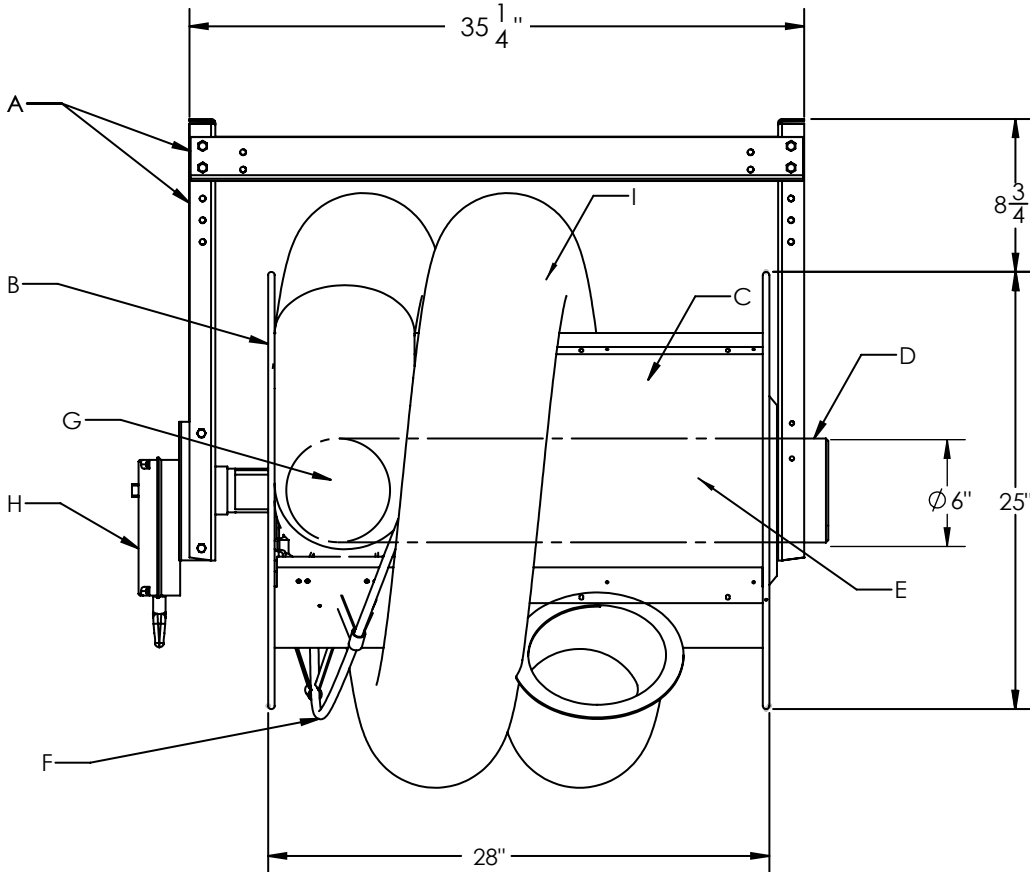
**TECHNICAL  
INFORMATION**

In the interest of continuing product improvement,  
we reserve the right to change models,  
specifications, and/or features without prejudice.

PROJECT: \_\_\_\_\_  
 LOCATION: \_\_\_\_\_  
 ARCHITECT: \_\_\_\_\_  
 ENGINEER: \_\_\_\_\_  
 CONTRACTOR: \_\_\_\_\_  
 DATE: \_\_\_\_\_ SALES ENGINEER: \_\_\_\_\_

**EXPLODED VIEW • 9000-W-MTR**

**Box-Type Motor, 28" Drum Width**



- A - Heavy Gauge Steel Support Mounting Frame
- B - End Flange
- C - Drum Assembly - 18" Diameter
- D - Duct Connection Fitting & Bearing Assembly
- E - Internal Hose Tube - 6" Diameter
- F - Hose Tracking Bar
- G - Hose to Drum Connector - 4", 5", 6" Diameter

- H - Direct Drive Motor Assembly
- I - Extraction Hose - 4", 5" or 6" Diameters

(Standard Hose Lengths are 16', 20', & 24' ... Other Lengths are Available - Please Contact Factory)

| <u>Model</u> | <u>Hose Dia.</u> | <u>Max. Hose Capacity<br/>on Drum</u> | <u>Drum Diameter</u> | <u>Drum Width</u> | <u>Approx. Wt.</u> |
|--------------|------------------|---------------------------------------|----------------------|-------------------|--------------------|
| 9000-W-MTR   | 4"               | 40'                                   | 18"                  | 28"               | 210 lbs.           |
| 9000-W-MTR   | 5"               | 34'                                   | 18"                  | 28"               | 210 lbs.           |
| 9000-W-MTR   | 6"               | 32'                                   | 18"                  | 28"               | 210 lbs.           |

Provided With: \_\_\_\_\_ Diameter \_\_\_\_\_ Feet/Hose \_\_\_\_\_ Series Hose