

## TECHNICAL INFORMATION

In the interest of continuing product improvement,  
we reserve the right to change models,  
specifications, and/or features without prejudice.

PROJECT: \_\_\_\_\_  
LOCATION: \_\_\_\_\_  
ARCHITECT: \_\_\_\_\_  
ENGINEER: \_\_\_\_\_  
CONTRACTOR: \_\_\_\_\_  
DATE: \_\_\_\_\_ SALES ENGINEER: \_\_\_\_\_

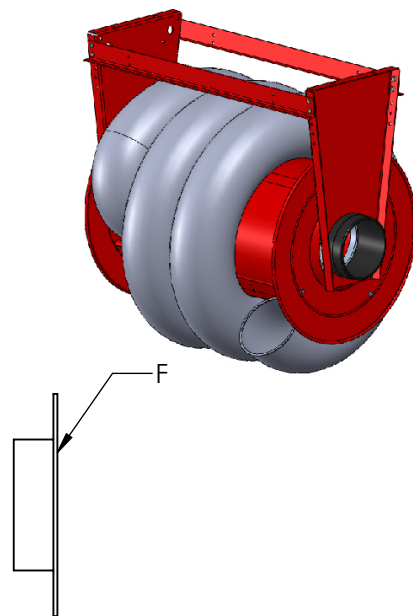
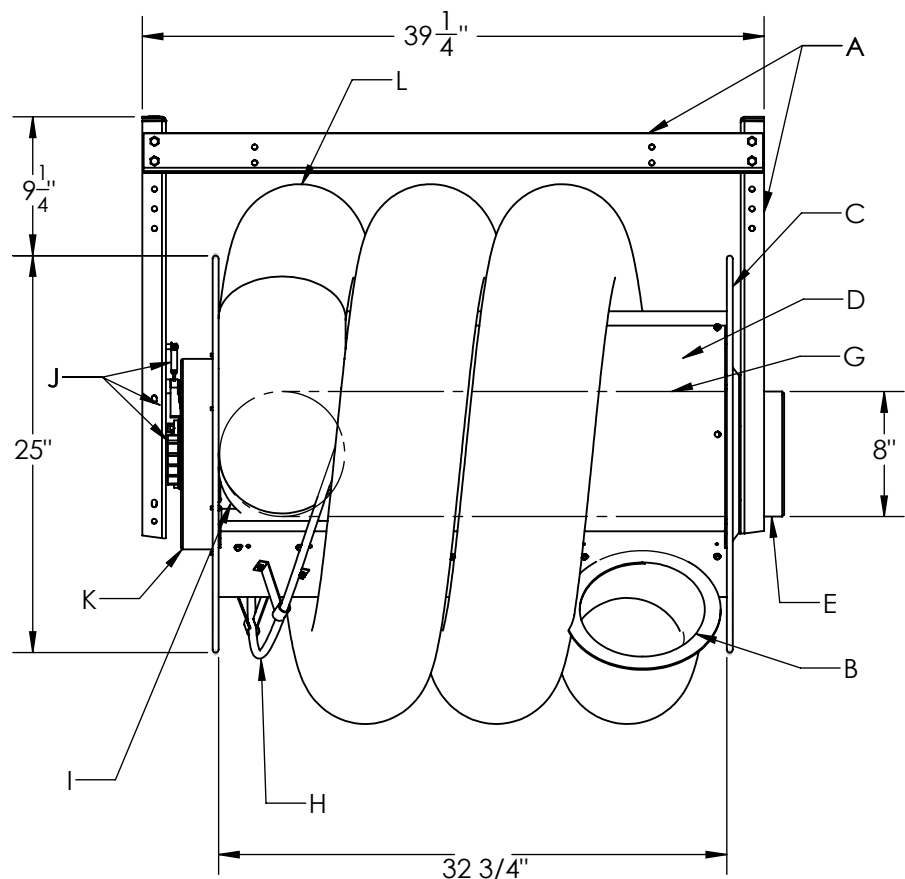
www.monoxivent.com

info@monoxivent.com

309-794-1000

Page: HRSO-6

### Exploded View



NOTE: The above dimensions are the same for both the motor operated hose reel and the widened version of the spring retractable hose reel (Series 9000-W).

- |   |  |
|---|--|
| A - Heavy Gauge Steel Support Mounting Frame      | G - Internal Hose Tube - 8" Diameter     |
| B - Adjustable Hose Stop                          | H - Hose Tracking Bar                    |
| C - End Flanges                                   | I - Hose to Drum Connector - 8" Diameter |
| D - Drum Assembly - 18" Diameter                  | J - Lock and Latch Mechanism             |
| E - Duct Connection Fitting & Bearing Assembly    | K - Spring Cassette Unit                 |
| F - Optional Mounting Flange for Direct Mount Fan | L - Extraction Hose - 8" Diameter        |

<u>Model</u>	<u>Hose Dia.</u>	<u>Max. Hose Capacity on Drum</u>	<u>Drum Diameter</u>	<u>Drum Width</u>	<u>Approx. Wt.</u>
9000-W	8"	24'	18"	32"	200 lbs.

Provided With: \_\_\_\_\_ Diameter \_\_\_\_\_ Feet/Hose \_\_\_\_\_ Series Hose

02 - 23