

# MONOXIVENT<sup>®</sup>

Source Capture Systems

## Operation and Maintenance Manual

### PAC



**MONOXIVENT - SOURCE CAPTURE SYSTEMS**

1306 Mill St., Rock Island, IL 61201  
877-608-4383 - [info@monoxivent.com](mailto:info@monoxivent.com)  
[monoxivent.com](http://monoxivent.com)

Nov. - 2020

## **Read and Study All Information Before Installation of PAC Assembly**

### **1. GENERAL INFORMATION: PAC-10/PAC-15/PAC-20**

**A.** Check all packages for shipping damage. If damage is found, then you as receiver must note and contact the truck/UPS/etc and file a claim. **THIS IS YOUR RESPONSIBILITY TO NOTE AND REPORT ANY DAMAGED GOODS.**

**2.** Assembly of the crane and accessories will be required. The following will assist in preparation for the assembly.

**3.** Layout the components for the PAC and verify all the components have been received

**A.** Front crane beam and rear crane beam with mounting bracket.

**B.** (2) Flex hoses. (1) @ 4' for center and (1) @ 4' at wall.

**C.** (3) duct cradles for hard pipe.

**D.** Clamps

**E.** Front beam bumper stop mounted on end of rear beam.

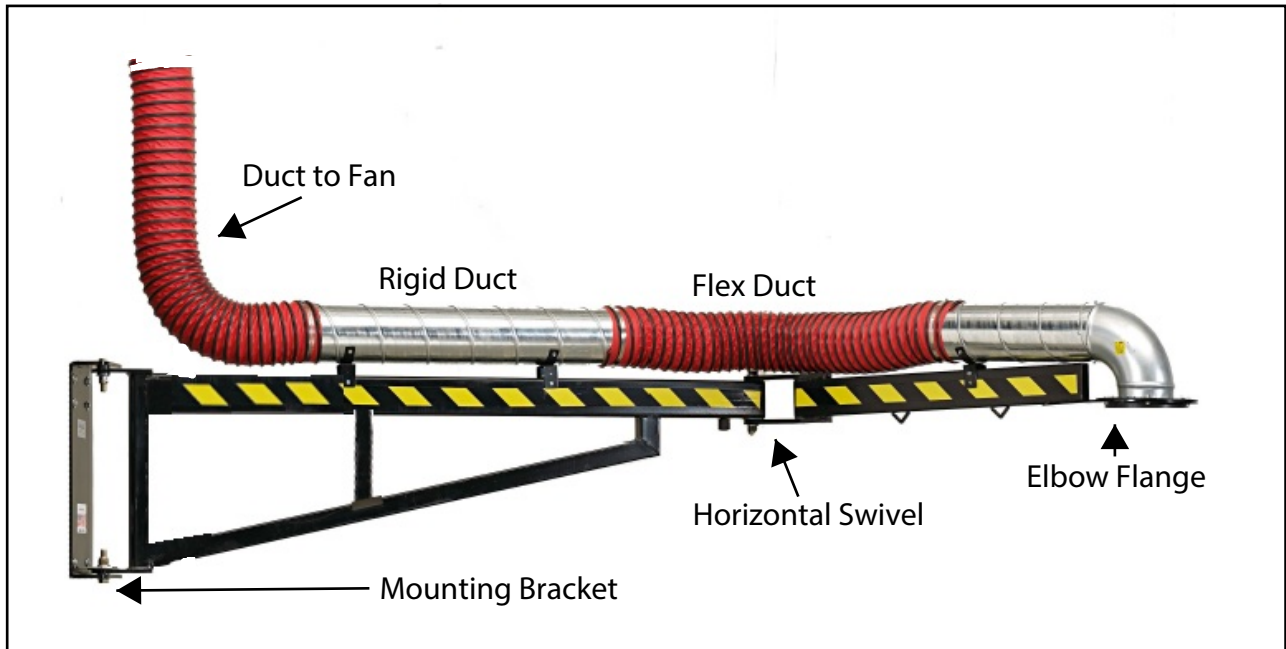
**F.** 90-degree elbow mounted to hard duct for front beam.

**G.** Individual blower with bracket if ordered. (Optional)

**4.** The accessories for the end of the PAC can vary from hoods, arms, hose with balancer or just hose. Please see the added accessory sheets that pertain to the accessory that was ordered for your PAC. This will provide assembly tips and further technical information.

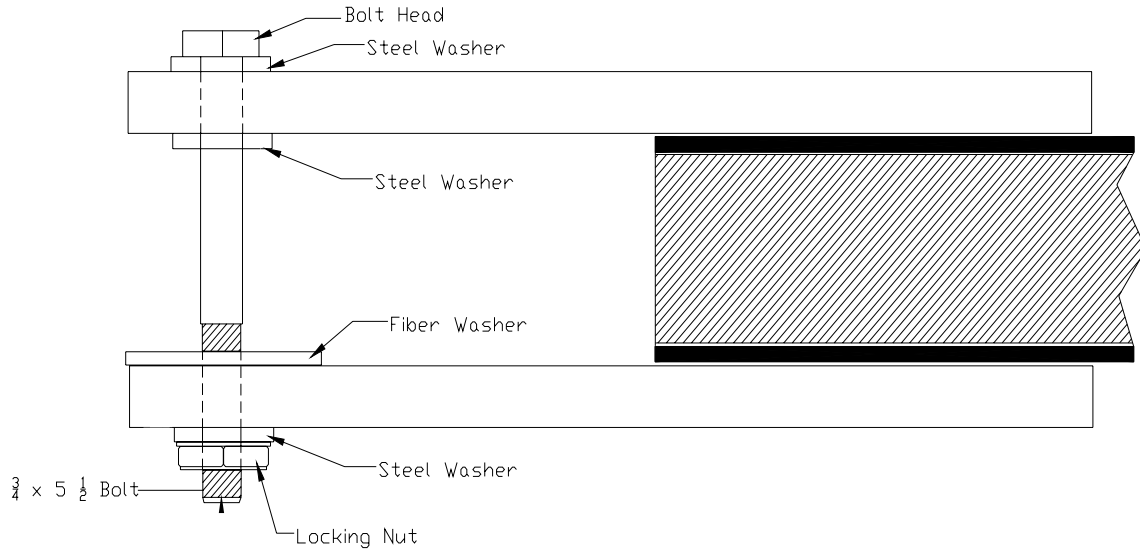
## **Installation Tips**

- 1.** Support structure for the PAC must be solid and secure. The structure to which the PAC will be mounted should be carefully reviewed for its strength. If there is any question or doubt about the structure, a structural engineer or other experienced person should be consulted. **RESPONSIBILITY AND LIABILITY OF SUCH SUPPORT STRUCTURE IS SOLELY UPON THE PERSON(S) SELECTING SUCH SUPPORT STRUCTURE.**
- 2.** After selection of the support structure, a decision on how the main support bracket of the PAC should be installed. The mounting bracket must be installed perfectly vertical to prevent drifting of the PAC. Depending upon installation equipment, it may be determined that the bracket should be removed from the PAC and installed to ensure the vertical accuracy of the bracket. Bracket can then be attached back onto the PAC. All hardware must be reinstalled exactly as original. Tighten hardware sufficiently enough so PAC swings firmly yet freely.
- 3.** Refer to drawing on page 3 for further installation tips and guidelines.
- 4.** See page 4 for center pivot hardware assembly.
- 5.** Determination if PAC is to be installed in sections or as an assembly is based upon what type of equipment is available at installation site.

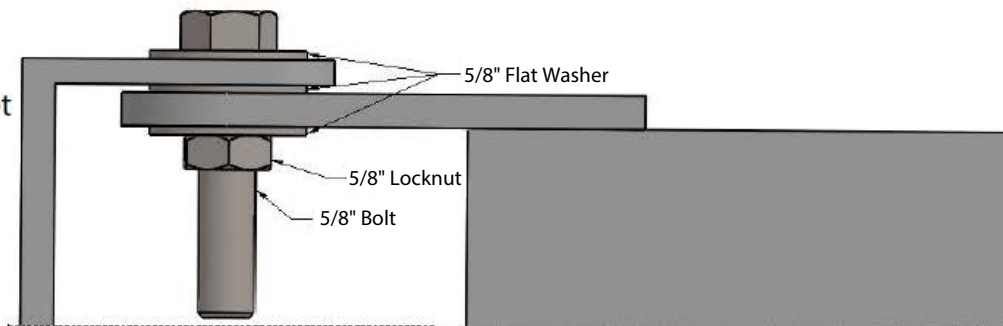


1. Install hard spiral with elbow onto front beam. Put elbow into the elbow flange and set hard duct onto cradle. Using the pre drilled holes in the cradle and elbow flange as guides. Secure with the supplied self tapping screws.
2. Install the 4' flex hose in the center pivot point and secure with clamps. Install the 4' flex hose to the hard duct at wall mount bracket.
3. Hose at the wall mount bracket will either clamp to a vertical duct branch or to an optional blower and bracket if supplied.

Pivoting Articulated Crane Arm  
Series - PAC, Assembly of Center Section: PAC -10, 15, 20



Upper portion of wall-mount bracket



Lower portion of wall-mount bracket

